



Disney Platinum Plan

The Disney Platinum Plan and its components may not be redeemed for cash in whole or in part, sold separately, transferred, or refunded. Theme Park admission is required for selected items/activities. Advance reservations may be required for some restaurants. Some facilities, activities, tours and recreation equipment rental may require advance reservations. Use is subject to availability and the local rules and regulations of the operating area. Operating hours, menus, entertainment, Characters, participating locations, components and terms are subject to change without notice.

Disney Platinum Plan features are based on the length of your package stay at your *Disney Resort Hotel*. The owners of the *Walt Disney World® Resort* shall not be liable or responsible for the non-utilization of Disney Platinum Plan components due to refurbishing, capacity, inclement weather, or any other circumstance beyond their control.

Disney Platinum Plan is not valid with any other offer.



Valid for arrivals 1/1/10 - 12/31/10

Welcome to the Disney Platinum Plan.

If your vacation dreams require that extra special touch, then the Disney Platinum Plan was created for you. It offers you a magical combination of fun and convenience. You'll enjoy a complement of dining, recreation, and fantastic entertainment options. This plan is full of possibilities!



Dining

Enjoy snacks and meals at over 100 select restaurants throughout *Walt Disney World® Resort*, including some restaurants that feature Disney Character Dining!

Number of Meals During Your Package Stay

Each Guest on the Disney Platinum Plan receives one (1) breakfast, lunch and dinner and two (2) snacks each night of their package stay. The plan also includes one (1) Resort refillable drink mug per person, per package (**eligible for refills at a Quick Service location *only* in your *Disney Resort* hotel**). The example below illustrates the dining plan for a three-night, four-day package.

Night 1	Night 2	Night 3	Breakfast	Lunch/Dinner	Snack
Breakfast	Breakfast	Breakfast	(1) Single-serving Juice	(1) Appetizer (at Table Service locations)	(2) Single-serving snack items*
Lunch	Lunch	Lunch	(1) Breakfast Entrée	(1) Entrée	* May substitute a snack for a single-serving non-alcoholic beverage
Dinner	Dinner	Dinner	(1) Single-serving non-alcoholic beverage	(1) Dessert	
2 Snacks	2 Snacks	2 Snacks		(1) Single-serving non-alcoholic beverage	
Includes one (1) Resort refillable drink mug per person, per package eligible only for refills at a Quick Service location in your <i>Disney Resort</i> hotel.			OR (if available)		
			(1) Full Breakfast Buffet	(1) Full Buffet	

Using Your Meals

🍷 Use your meals and snacks in any order throughout your package stay until your total is depleted.



GREAT TIP!

You can continue using meals/snacks in any order during your package stay until each person has depleted his/her allotted meals/snacks. For example, if you use all your snacks on the first day, that will leave zero snacks for the remainder of your stay.

🍷 All unused meals and snacks expire at midnight on your package reservation checkout date.

Continued on next page



Snacks

Some examples of eligible snack options include:

-  Frozen Ice-Cream Novelty, Popsicle or Fruit Bar
-  20 oz. Bottle of Coke®, Diet Coke®, Sprite® or 20 oz. Dasani® Water
-  Popcorn Scoop (single-serving box)
-  22 oz. Fountain Soft Drink
-  Single Piece of Whole Fruit
-  12 oz. Coffee, Hot Chocolate, or Hot Tea
-  Single-serving Bag of Snacks
-  Single-serving Prepackaged Milk or Juice



TIP: Look for this symbol to identify Quick Service restaurants, outdoor food carts and select merchandise locations that accept your Disney Platinum Plan and to identify eligible snack options. You may redeem your snacks at most Quick Service restaurants, outdoor food carts and merchandise locations selling frozen ice-cream novelties, popcorn or Coca-Cola® products throughout the Walt Disney World® Resort.

GRAND *gathering* EXPERIENCES*

If you have eight or more in your party, you can join other *Grand Gathering* parties in select exclusive Disney experiences. **Each experience is operated on select days of the week.** At least eight persons in your party must attend the same experience. **Each person participating in one of the following *Grand Gathering Experiences* will have one meal redeemed from their meal plan balance:**

- International Dinner and IllumiNations Dessert Reception – Epcot®
- Safari Celebration Dinner – Disney's Animal Kingdom® Theme Park
- Good Morning Character Breakfast – Magic Kingdom® Park

Gratuities are included. *Experiences are subject to change and cancellation. Experience may be cancelled by Guests up to 6 days prior to experience date without charge for the experience. Reservations required and may be made up to 180 days in advance but no later than 3 days prior to the experience date. Valid Theme Park ticket required.

Redeeming Your Meals

- Present your Key to the World card to the server or cashier at the time a meal or snack is purchased and specify the number of meals or snacks being redeemed for Guests ages 10+ on your Disney Platinum Plan and the number of meals or snacks being redeemed for Guests ages 3-9 on your Disney Platinum Plan.
- You may **not** redeem meals or snacks for any Guests who are not on your package and the Disney Platinum Plan.



GREAT TIP!

When dining with another party who is also using their Key to the World card to redeem their meals, please notify the server which meals belong on which Disney dining plan.

- The following items are **not** included in the Disney Platinum Plan:
 - Alcoholic beverages and some bottled drinks
 - Merchandise and Photo Imaging
 - Snacks and beverages from recreation rental counters
 - Glow Cubes
 - Souvenir drink mugs
- **Gratuities are not included unless otherwise indicated.** An automatic 18% gratuity charge will be added to your bill for parties of 6 or more. An automatic gratuity charge may also be added to your bill for items you order that are not included in the Disney Platinum Plan (e.g. alcoholic beverages).
- The Disney Platinum Plan is unavailable for Guests under the age of 3, but they may share from an adult plate at no charge, or a meal may be purchased from the menu. The price of the meal will be added to your bill. Guests ages 3-9 must order from a children's menu where available.



GREAT TIP!

Our Table Service restaurants, character dining and dinner shows book quickly and the restaurant and seating of your choice may be limited or may not be available during your visit. Please make reservations online at disneyworld.com/dining or by calling 407-WDW-DINE up to 180 days prior to your visit for the best options.

Tracking Your Meals

- Your meal usage will be tracked electronically to your package reservation.

The example below illustrates a party with 2 Guests ages 10+ and 2 Guests ages 3-9 utilizing one of their meal entitlements:

Number of Guests in Party		Total Quick Service Meals	Number of Meals Redeemed	=	Meals Remaining
2 Guests ages 10 and over:	Quick Service Meals	10	2		8
2 Guests ages 3-9:	Quick Service Meals	10	2		8
Total:		20	4		16



GREAT TIP!

Each time you redeem meals or snacks from your Disney Platinum Plan, the server or cashier will provide you with a receipt showing the meals and snacks remaining on your Disney Platinum Plan. You can also contact your hotel concierge at any time for your meal plan balance.

Please refer to the complete list of dining locations on the next 2 pages.

DINING LOCATIONS



Quick Service



Table Service



Character Dining



Signature Restaurants



Dinner Shows



Gratuities Included

B = Breakfast L = Lunch D = Dinner

R = Advance reservations strongly recommended



Look for this symbol to identify Quick Service restaurants, outdoor food carts and select merchandise locations that accept your Disney Platinum Plan and to identify eligible snack options.

Disney's All-Star Movies Resort

- World Premiere Food Court (B,L,D)
- Pizza Delivery (D)

Disney's All-Star Music Resort

- Intermission Food Court (B,L,D)
- Pizza Delivery (D)

Disney's All-Star Sports Resort

- End Zone Food Court (B,L,D)
- Pizza Delivery (D)

Disney's Animal Kingdom Lodge

- Maji Pool Bar (L,D)
- The Mara (B,L,D)
- Boma-Flavors of Africa (B,D)
- Sanaa (L,D)
- Jiko-The Cooking Place (D)
- Private In-room Dining (B,L,D)

Disney's BoardWalk Resort

- The Belle Vue Lounge (B)
- BoardWalk Bakery (B,L,D)
- ESPN Club (L,D)
- Kouzzina by Cat Cora™ (B,D)
- Flying Fish Cafe (D)
- Private In-room Dining (B,L,D)

Disney's Caribbean Beach Resort

- Old Port Royale Food Court (B,L,D)
- Shutters at Old Port Royale (D)
- Pizza Delivery (D)

Disney's Contemporary Resort

- Contempo Cafe (B,L,D)
- Cove Bar (L,D)
- The Sand Bar (L,D)
- The Wave (B,L,D)
- Chef Mickey's Fun Time Buffet at Chef Mickey's (B,D)
- California Grill (D)
- Private In-room Dining (B,L,D)

Disney's Fort Wilderness Resort & Campground

- Meadow Snack Bar (seasonal) (L)
- Crockett's Tavern (D)
- Trail's End Restaurant (B,L,D)
- Hoop-Dee-Do Musical Revue ** (D)
- Mickey's Backyard BBQ ** (seasonal) (D)

Disney's Grand Floridian Resort & Spa

- Gasparilla Grill & Games (B,L,D)
- Grand Floridian Cafe (B,L,D)
- Cinderella's Happily Ever After Dinner at 1900 Park Fare (D)
- Supercalifragilistic Breakfast at 1900 Park Fare (B)
- Citricos (D)
- Narcoossee's (D)
- Victoria & Albert's*** (D)
- Private In-room Dining (B,L,D)

Disney's Old Key West Resort

- Good's Food to Go (B,L,D)
- Olivia's Cafe (B,L,D)

Disney's Polynesian Resort

- Capt. Cook's (B,L,D)
- Kona Cafe (B,L,D)
- 'Ohana (D)
- 'Ohana's Best Friends Breakfast featuring Lilo & Stitch (B)
- Disney's Spirit of Aloha Dinner Show** (D)
- Private In-room Dining (B,L,D)

Disney's Pop Century Resort

- Everything POP Shopping and Dining (B,L,D)
- Pizza Delivery (D)

Disney's Port Orleans Resort

- Riverside Mill Food Court (B,L,D)
- Sassagoula Floatworks and Food Factory (B,L,D)
- Boatwright's Dining Hall (D)
- Pizza Delivery (D)

Disney's Saratoga Springs Resort & Spa

- The Artist's Palette (B,L,D)
- The Turf Club Bar and Grill (L,D)

Disney's Wilderness Lodge

- Roaring Fork (B,L,D)
- Whispering Canyon Cafe (B,L,D)
- Artist Point (D)
- Private In-room Dining (B,D)

Disney's Yacht & Beach Club Resorts

- Ale and Compass Lounge (B)
- Beach Club Marketplace (B,L,D)
- Hurricane Hanna's Grill (L)
- Beaches & Cream Soda Shop (L,D)
- Cape May Cafe (D)
- Captain's Grille (B,L,D)
- Beach Club Breakfast Buffet at Cape May Cafe (B)
- Yachtsman Steakhouse (D)
- Private In-room Dining (B,L,D)

Disney's Osprey Ridge Golf Club

- Sand Trap Bar & Grill (B,L)

Disney Platinum Plan locations are subject to change without notice. Theme Park admission is required for some dining locations. Operational hours may vary.

**Please pick up your dinner show ticket at the Concierge at your Disney Resort Hotel prior to arriving at the show. Subject to availability.

***Victoria & Albert's at Disney's Grand Floridian Resort & Spa extends the Premium Menu to Disney Platinum Plan Guests. If you wish to upgrade to the Chef's Table, Elite Menu, or include Royal Wine Pairing with your meal, additional charges apply and will be handled separately from the Disney Platinum Plan.

RESERVATIONS: 407-WDW-DINE

Haven't made your dining reservations yet? Our Table Service restaurants, character dining and dinner shows book quickly and the restaurant and seating of your choice may be limited or may not be available during your visit. Please make reservations online at disneyworld.com/dining or by calling 407-WDW-DINE up to 180 days prior to your visit for the best options. Reservations are accepted at most Walt Disney World® Table Service Restaurants, Signature Restaurants, and Character Dining locations. Advance reservations are required for Dinner Shows and Grand Gathering Experiences. An accepted major credit card guarantee is required for reservations at certain locations. Reservations must be cancelled at least 48 hours (6 days for Grand Gathering Experiences) before the scheduled seating time or a cancellation charge may be incurred (charge varies by location). Please indicate any food allergies or other health-related dietary restrictions at the time of booking. We are happy to discuss with you and attempt to accommodate your special dietary requests.

DINING LOCATIONS



Quick Service



Table Service



Character Dining



Signature Restaurants



Dinner Shows



Gratuities Included

B = Breakfast L = Lunch D = Dinner
R = Advance reservations strongly recommended



Look for this symbol to identify Quick Service restaurants, outdoor food carts and select merchandise locations that accept your Disney Platinum Plan and to identify eligible snack options.

Magic Kingdom® Park

- Casey's Corner (L,D)
- Columbia Harbour House (L,D)
- Cosmic Ray's Starlight Cafe (L,D)
- El Pirata y el Perico Restaurante (seasonal) (L)
- The Lunching Pad (L,D)
- Main Street Bakery (B,L,D)
- Pecos Bill Tall Tale Inn and Cafe (L,D)
- Pinocchio Village Haus (L,D)
- Tomorrowland Terrace Noodle Station (seasonal) (L,D)
- Liberty Tree Tavern (L,D)
- The Plaza Restaurant (L,D)
- Tony's Town Square Restaurant (L,D)
- A Buffet with Character at The Crystal Palace (B,L,D)
- A Fairytale Lunch at Cinderella's Royal Table (L)
- Once Upon a Time Breakfast at Cinderella's Royal Table (B)
- Dreams Come True Dinner at Cinderella's Royal Table (D)

Epcot®

- Electric Umbrella (L,D)
- Kringla Bakeri Og Kafe (L,D)
- Liberty Inn (L,D)
- Sommerfest (L,D)
- Sunshine Seasons (B,L,D)
- Yorkshire County Fish Shop (L,D)
- Biergarten Restaurant (L,D)
- Coral Reef Restaurant (L,D)
- Le Cellier Steakhouse (L,D)
- Rose & Crown Pub & Dining Room (L,D)
- Chip 'N' Dale's Harvest Feast at The Garden Grill (D)
- Princess Storybook Dining at Akershus Royal Banquet Hall (B,L,D)

Disney's Hollywood Studios™

- ABC Commissary (L,D)
- Backlot Express (L,D)
- Catalina Eddie's (L,D)
- Fairfax Fare (B,L,D)
- Pizza Planet (L,D)
- Rosie's All-American Cafe (L,D)
- Starring Rolls Cafe (B,L,D)
- Studio Catering Company (L,D)
- Toluca Legs Turkey Co. (L,D)
- 50's Prime Time Cafe (L,D)
- Hollywood & Vine (D)
- Mama Melrose's Ristorante Italiano (L,D)
- Sci-Fi Dine-In Theater Restaurant (L,D)
- Playhouse Disney's Play 'n Dine at Hollywood & Vine (B,L)
- The Hollywood Brown Derby (L,D)

Disney's Animal Kingdom® Theme Park

- Dino Diner (L,D)
- Flame Tree Barbecue (L,D)
- Pizzafari (L,D)
- Restaurantosaurus (L,D)
- Tamu Tamu Refreshments (L,D)
- Tusker House Restaurant (L,D)
- Donald's Safari Breakfast at Tusker House Restaurant (B)

Disney's Typhoon Lagoon Water Park

- Leaning Palms (L)
- Typhoon Tilly's (L)

Disney's Blizzard Beach Water Park

- Avalunch (L)
- Lottawatta Lodge (L)
- The Warming Hut (L)

Downtown Disney® Area

- FoodQuest (L,D)
- Cap'n Jack's Restaurant (L,D)

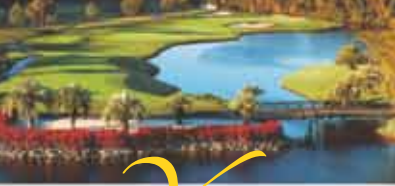
Disney's Wide World of Sports® Complex

- Disney's Wide World of Sports® Cafe (L,D)

Disney Platinum Plan locations are subject to change without notice. Theme Park admission is required for some dining locations. Operational hours may vary.

RESERVATIONS: 407-WDW-DINE

Haven't made your dining reservations yet? Our Table Service restaurants, character dining and dinner shows book quickly and the restaurant and seating of your choice may be limited or may not be available during your visit. Please make reservations online at disneyworld.com/dining or by calling 407-WDW-DINE up to 180 days prior to your visit for the best options. Reservations are accepted at most Walt Disney World® Table Service Restaurants, Signature Restaurants, and Character Dining locations. Advance reservations are required for Dinner Shows and Grand Gathering Experiences. An accepted major credit card guarantee is required for reservations at certain locations. Reservations must be cancelled at least 48 hours (6 days for Grand Gathering Experiences) before the scheduled seating time or a cancellation charge may be incurred (charge varies by location). Please indicate any food allergies or other health-related dietary restrictions at the time of booking. We are happy to discuss with you and attempt to accommodate your special dietary requests.



RECREATION

You may use recreation equipment and facilities as often as you like throughout your package stay, subject to the local operating rules of the recreation facility and the Disney Platinum Plan guidelines. Remember to let the recreation host or hostess know you are on the Disney Platinum Plan. Some recreational activities have restrictions and some activities require a parent or legal guardian to either participate or sign a release. See the next page for a complete list of recreation locations.

Walt Disney World® Golf

The *Walt Disney World*® Resort has four 18-hole championship golf courses and one 9-hole, par 36, walking course, all designed by masters of the trade. The Disney Platinum Plan includes unlimited golf, lessons, green fees, electric cart, range balls, rental golf shoes and rental clubs per person. All golf club and golf shoe rentals require a photo ID.

Complimentary transportation is provided to and from select *Walt Disney World*® Resort hotels. Please see the valet desk or bell services to arrange pickup times. Proper golf attire is required and golf shoes are recommended but not required. Tennis shoes with relatively flat sole designs or golf shoes with metal spike alternatives are permitted on the courses. A parent or legal guardian must accompany guests under 16. Please call 407-WDW-GOLF (407-939-4653) for all golf reservations and additional information.

Courses Available for Play:

- 🍷 *Disney's Lake Buena Vista* Golf Course – A classic country club setting winding through pines and vacation villas.
- 🍷 *Disney's Osprey Ridge* Golf Course – A masterpiece of scenic golf in a Florida nature preserve.
- 🍷 *Disney's Magnolia* Golf Course – Play where the brightest stars of the PGA TOUR have competed since 1971.
- 🍷 *Disney's Palm* Golf Course – A magical day in the Florida sun, among palm trees, tropical sand and sparkling lakes.
- 🍷 *Disney's Oak Trail* Golf Course – A par 36, 9-hole walking course, perfect for a gentle warm-up, or a fun family outing.

Private Golf Lessons – Private 45-minute golf lessons from our PGA Professional Staff are available by appointment. Please call 407-WDW-GOLF (407-939-4653) for reservations.

Guided Fishing Excursions

Hook a fun-filled fishing trip for the whole family! A two-hour excursion includes boat, guide, tackle, fishing equipment, (1) one-year B.A.S.S. membership and refreshments. Morning, midday and afternoon excursions are available. Excursions may be canceled due to inclement weather. All fishing is done on a catch-and-release basis. For reservations, touch "57" on your in-room telephone or call 407-WDW-BASS (407-939-2277). Cancellations must be made at least 24 hours in advance.

Water Sports

Enjoy a day of water sports activities with World Champion Sammy Duvall's group of professional instructors. Excursions leave from *Disney's Contemporary* Resort. Please arrive at least 20 minutes prior to your reservation. Trips may be canceled due to inclement weather. For reservations, call 407-939-0754. Please make cancellations at least 24 hours in advance.

Parasailing

Parasail excursions are available daily for single or double riders. Combined minimum and maximum weight restrictions apply.

Wakeboarding and Tubing

Wakeboard/Tubing sessions include a fully equipped tournament boat, instructor and state-of-the-art equipment.

Water-skiing

Sessions include a tournament ski boat, instructor and all related equipment.

Personal Watercraft Excursions

Guests are guided by a certified specialist around *Bay Lake* and *Seven Seas Lagoon*, pausing along the way to view "points of interest." At the conclusion of the excursion, Guests are given time to "free ride" under the supervision of the guides. Afternoon "free ride" rentals also available.

Watercraft Rentals

Set sail for a terrific outing with the whole crew! Watercrafts include *Sea Ray*® by Sea Ray®, Boston Whaler Montauks, Sun Tracker pontoon boats, canoes, kayaks, pedal boats, and sailboats. Watercraft selection varies by location. All motorized watercraft rentals are powered by Mercury Marine. Specialty Cruises not included.

Bicycles

Wind your way through scenic paths on a relaxing bike ride. Adult and children's bicycles are available for hourly or daily rental. Children under 16 must wear a bicycle helmet. Helmets are included with this rental. Surrey bicycles are also available at select locations and are available for 1-hour rentals.

Cane Pole Fishing

Want to do some fishin' Tom Sawyer-style? Hang a cane pole from one of our select docks and feel as if you've stepped back in time. Fishing is on a catch-and-release basis.

Tennis

Disney's Grand Floridian Resort Tennis Center features professionally maintained HarTru soft-surface lighted clay courts. Tennis includes use of tennis court, ball machine and racquet rentals. Call 407-621-1991 for details.



Horseback Trail Rides

Hit the trail at *Disney's Fort Wilderness Resort & Campground* for a gentle 45-minute horseback ride through scenic surroundings. Jeans or slacks are recommended. Open-toe shoes are not permitted. Rides may be canceled due to inclement weather. Touch "57" on your in-room telephone or call 407-WDW-PLAY (407-939-7529) for reservations. Guests must be at least 9 years old to ride.

Pony Rides

A child's favorite! Located at *Disney's Fort Wilderness Resort & Campground Pony Farm*. Offered daily from 10:00 a.m. to 5:00 p.m., weather permitting. Operating hours are subject to change without notice. Guests must be under 80 pounds (36 kilograms) and under 48 inches (122 centimeters) to ride.

Carriage Rides

A relaxing and intimate 25-minute carriage ride. Each carriage holds 4 adults or 2 adults and 3 small children. Offered at *Disney's Fort Wilderness Resort & Campground* daily from 5:30 p.m. to 9:30 p.m. and *Disney's Port Orleans Resort* daily from 5:30 p.m. to 9:30 p.m., weather permitting. Operating hours are subject to change without notice. For reservations, touch "57" on your in-room telephone or call 407-WDW-PLAY (407-939-7529). Please make cancellations at least 24 hours in advance. Same-day reservations can be made by calling 407-824-2832.

Horse-Drawn Wagon Rides

Each night, relaxing horse-drawn wagon rides wander the trails of *Disney's Fort Wilderness Resort & Campground* and the shores of *Bay Lake*. Horse-drawn wagon rides depart from *Pioneer Hall*, last approximately 45 minutes, and return to *Pioneer Hall*. May be canceled due to inclement weather. To verify times of departure, please call 407-824-2734.

Miniature Golf

Enjoy a round of miniature golf at either *Disney's Winter Summerland* or *Disney's Fantasia Gardens* Miniature Golf Courses. Both courses are open from 10:00 a.m. until 11:00 p.m. daily, weather permitting. Operating hours subject to change without notice.

At *Disney's Winter Summerland* Miniature Golf Course, Santa's elves built two distinctly different 18-hole golf experiences — a "sand" course and a "snow" course. *Disney's Winter Summerland* Miniature Golf Course is adjacent to *Disney's Blizzard Beach Water Park*.

Disney's Fantasia Gardens Miniature Golf Course features two 18-hole miniature golf adventures based on Disney's classic animated film "Fantasia." Choose *Disney's Fantasia Gardens* Miniature Golf Course for a fantastic escapade complete with music and interactive obstacles. Experienced golfers can challenge *Disney's Fantasia Fairways*, complete with par-three and par-four holes ranging in length from 40 to 75 feet long.

Archery

It takes a steady hand to land a bull's-eye at the Fort Wilderness Archery Experience! Archery Guides lead you through a short training session on basic archery fundamentals and offer tips and tricks so you can enjoy open range time and target archery. Don't miss the opportunity to try your hand at this unique experience! Thursday, Friday and Saturday only. Advance reservations and credit card guarantee required (cancellation penalties apply if cancelled in less than 48 hours). Guests must be at least 6 years of age to participate.

Children's Activity Centers

Enjoy unlimited use of our *Children's Activity Centers*, designed especially for kids between 4 and 12 years of age. **All children must be potty trained.** Your child will enjoy games and activities while you enjoy some Disney grown-up fun! Dinner is included and can be ordered at time of drop off. All *Children's Activity Centers* are open from 4:30 p.m. to midnight. For information and reservations, please call 407-WDW-DINE (407-939-3463) or touch "55" on your in-room telephone.



Please refer to the complete list of locations at left.



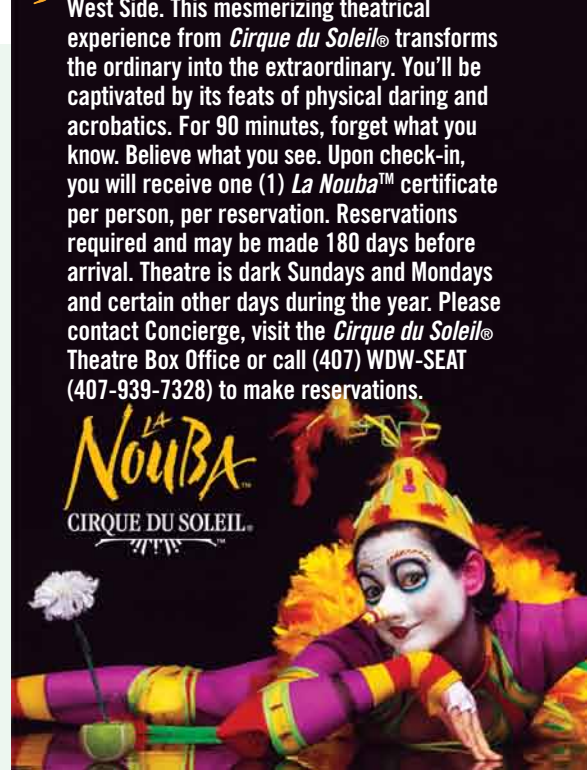
In-Room Child Care

An outside vendor provides one-on-one in-room child care (four-hour minimum and six-hour maximum). The caregivers will provide individual attention to your child right in the comfort of your *Disney Resort* hotel room. Reservations are required, subject to availability and may be booked up to 180 days in advance but no later than 24 hours in advance. Cancellations require a 24-hour advance notice. Gratuity not included.

RECREATION LOCATIONS

BIKING	WATERCRAFT RENTAL	CANE POLE FISHING	GUIDED FISHING EXCURSION	CHILDREN'S ACTIVITY CENTER
<i>Disney's Animal Kingdom Lodge</i> <i>Simba's Cubhouse</i>				
<i>Disney's BoardWalk Resort</i> <i>Ferris W. Eahlers</i>				
<i>Disney's Caribbean Beach Resort</i> <i>Barefoot Bay Boat Yard/Bike Works</i>				
<i>Disney's Contemporary Resort</i> <i>Boat Nook</i> <i>Sammy Duvall's Watersports Centre</i>				
<i>Downtown Disney® Marketplace</i> <i>Cap'n Jack's Marina</i>				
<i>Disney's Fort Wilderness Resort & Campground</i> <i>Fort Wilderness Marina & Bike Barn</i>				
<i>Disney's Grand Floridian Resort & Spa</i> <i>The Captain's Shipyard</i> (excludes the "Grand 1" Sea Ray Yacht) <i>Mouseketeer Clubhouse</i>				
<i>Disney's Old Key West Resort</i> <i>Hank's Rent 'N Return</i>				
<i>Disney's Polynesian Resort</i> <i>Mikala Canoe Club</i> <i>The Never Land Club</i>				
<i>Disney's Port Orleans Resort</i> <i>Riverside Levee</i> <i>Fishin' Hole</i>				
<i>Disney's Saratoga Springs Resort & Spa</i> <i>Horsing Around Recreation Rentals</i> <i>Pick-up at the canal dock</i>				
<i>Disney's Wilderness Lodge</i> <i>Teton Boat & Bike Rentals</i> <i>Cub's Den</i>				
<i>Disney's Yacht and Beach Club Resorts</i> <i>Bayside Marina</i> (excludes the "Breathless") <i>Sandcastle Club</i>				

Prepare to be amazed by *La Nouba™*, now playing at *Downtown Disney® West Side*. This mesmerizing theatrical experience from *Cirque du Soleil®* transforms the ordinary into the extraordinary. You'll be captivated by its feats of physical daring and acrobatics. For 90 minutes, forget what you know. Believe what you see. Upon check-in, you will receive one (1) *La Nouba™* certificate per person, per reservation. Reservations required and may be made 180 days before arrival. Theatre is dark Sundays and Mondays and certain other days during the year. Please contact Concierge, visit the *Cirque du Soleil®* Theatre Box Office or call (407) WDW-SEAT (407-939-7328) to make reservations.





Dazzling Fireworks Cruise

Set out on a spectacular fireworks cruise to view *Wishes™* at the *Magic Kingdom®* Park or *IllumiNations: Reflections of Earth at Epcot®*. You'll be immersed in the action as the skies above explode with bursts of color.

Cruises depart on selected nights throughout the year based on performance schedules. *Wishes* cruises depart from *The Captain's Shipyard* at *Disney's Grand Floridian Resort & Spa*, and *IllumiNations* cruises depart from the *Bayside Marina* at *Disney's Yacht Club Resort*. Please arrive at the marina 45 minutes prior to the scheduled start of the fireworks display. Reservations are required and may be made up to 180 days in advance or at least one day in advance with Concierge. Cancellations must be made at least 24 hours in advance.

Cruises may be canceled due to inclement weather. Seating is limited, and you may be seated with other parties. All cruises are subject to availability. One cruise per reservation. Other Specialty Cruises as well as the *Breathless II* and "Grand 1" Sea Ray Yacht are not available with the Disney Platinum Plan.



Fantasmic! – Reserved Seating

Sorcerer Mickey and friends battle some of Disney's evilest villains in the dazzling nighttime spectacular *Fantasmic!* at *Disney's Hollywood Studios™*. This extravaganza combines classic Disney Characters, searing pyrotechnics, walls of water, daring stunts, brilliant lasers, and a score of timeless Disney music.

Each Guest on the Disney Platinum Plan enjoys reserved seating in *The Hollywood Hills Amphitheater* on a select night for one show during their package stay. Shows are performed on select days of the week and schedule subject to change without notice; valid Theme Park admission required; subject to availability. Reservations are required and may be made up to 180 days in advance by contacting your resort's Itinerary Planning Office. You must arrive at least 30 minutes prior to show time to guarantee your reserved seating. *Fantasmic!* is an outdoor show and is subject to cancellation due to inclement weather.



Spa Treatments

Rejuvenate your body and mind with a luxurious spa treatment. The Disney Platinum Plan includes one selected treatment per person at one of the following locations:

- Disney's Grand Floridian Spa & Health Club*
- The Spa at Disney's Saratoga Springs Resort*
- Disney's Animal Kingdom Lodge – Zahanati Massage and Fitness Center*
- Disney's BoardWalk Resort – Muscles and Bustles Health Club*
- Disney's Contemporary Resort – Olympiad Fitness Center*
- Disney's Coronado Springs Resort – La Vida Health Club*
- Disney's Wilderness Lodge – Sturdy Branches Health Club*
- Disney's Yacht & Beach Club Resorts – Ship Shape Health Club*

Each Guest 10 years of age or older may choose one (1) of the following treatments during their package stay:

- One 50-minute Swedish Massage
- One 50-minute Radiance Facial of choice
- One Spa Manicure and Pedicure Combination

Guests who wish to enjoy additional spa services will be charged the standard fees which will be handled separately.

To make reservations at any of the above locations, please touch Spa, Health Club, or Fitness Center on your in-room phone. An accepted major credit card is required for booking. Please arrive at least 30 minutes prior to your scheduled appointment time, as all appointments begin and end at the scheduled time. Changes and cancellations are required at least 4 hours prior to the appointment to avoid charges. Guests 10 to 18 years of age must be accompanied by an adult, and an adult must be present during massage treatments. Gratuities are included.



Disney's PhotoCD

Receive one *Disney's PhotoPass®* PhotoCD with your package. You'll receive high-resolution .jpg images of all your *Disney's PhotoPass®* photos plus a copyright release so you can use them in the sizes and formats that best suit your personal needs. To get started, get lots of photos taken by *Disney's PhotoPass®* photographers. After your vacation, visit DisneyPhotoPass.com* to view and edit your photos and order your *Disney's PhotoCD*. Use the promotion code provided upon check-in on your special *Disney's Platinum Plan Disney's PhotoPass®* card to get your *Disney's PhotoCD*. Note that *Disney's PhotoCD* is only available by ordering online with the code you receive at check-in. It is not redeemable in the Theme Parks. Photos taken by *Disney's PhotoPass®* Professional Portrait Service are not included (see below). Review your check-in materials for more details.

*Online registration required.



Disney's PhotoPass Professional Portraits Service

Gather the family for beautiful portraits taken in picturesque locations throughout select *Walt Disney World®* Resort locations, including (subject to change): *Disney's Grand Floridian Resort & Spa*, *Disney's Polynesian Resort*, *Disney's Beach Club Resort*, *Disney's Animal Kingdom Lodge*, and *Disney's Wilderness Lodge*. Receive one portrait session and one print package from *Disney's PhotoPass® Professional Portrait* service with your package.

Note that *Disney's PhotoPass® Professional Portrait* CD and *Disney's PhotoCD* are not included. While *Disney's PhotoCD* is included with the *Disney Platinum Plan* (see above), it does not include the images taken during the portrait session. Please call 407-934-4004 to reserve your portrait session. Advance reservations are required.



Richard Petty Ride Along Experience

Experience real life racing thrills by riding shotgun in a two-seater stock car driven by a professional instructor as you experience a real simulated race car qualifying run at the *Walt Disney World Speedway*. One *Richard Petty Ride Along Experience* per Guest 14 years of age and older, per package stay is included. Proof of age required. Reservations are not required.

Disney TOURS



Discover the *Walt Disney World*® Resort as you have never imagined! Advance reservations are required. Due to considerable walking, a comfortable pair of shoes is recommended. Some tours have restrictions and some tours require a parent or legal guardian to either participate or sign a release. Backpacks or other packages are not allowed. All programs are subject to change. You may arrange as many tours as you like throughout your package stay. For times, dates, availability, and additional information, please call (407) WDW-TOUR (407-939-8687). An accepted major credit card guarantee is required. Cancellations must be made at least 48 hours in advance or a cancellation charge may be incurred.

Photo ID required; valid Theme Park ticket required except for Backstage Magic, Disney's Dolphins in Depth Tour, Epcot® Seas Aqua Tour, Epcot® DiveQuest Tour, and Disney's Wilderness Back Trail Adventure.

Mickey's Magical Milestones Tour

Chronicle the fascinating world, development and success of Mickey Mouse while touring the *Magic Kingdom*® Park. This is a 2-hour experience, presented every Monday, Wednesday and Friday; most appreciated by Guests 10 years of age and above.

Disney's Family Magic Tour

Take the family on an exciting journey through the *Magic Kingdom*® Park. Young and old alike can revisit their childhood on this fanciful tour of the most magical place on earth. Presented daily and lasts approximately 2 hours. Guests of all ages may participate; most appreciated by Guests 4 to 10 years of age and their families.

Disney's The Magic Behind Our Steam Trains Tour

Get an inside look at the *Walt Disney World*® Railroad. Explore Walt Disney's passion for steam trains as you join the opening crew and prepare for the daily railroad operation at the *Magic Kingdom*® Park. This tour is presented Monday through Saturday and lasts approximately 3 hours. Guests must be at least 10 years of age to participate.

Disney's Keys to The Kingdom Tour

This tour invites you to explore the *Magic Kingdom*® Park and take a special look at the history, heritage, and philosophies behind the Park. This informative expedition takes you through the themed lands of the *Magic Kingdom*® Park, as well as backstage, to marvel at the operation that makes all the magic possible. Presented daily and lasts approximately 4½-5 hours. Guests must be at least 16 years of age to participate.

Around the World at Epcot® Tour

Challenge yourself "around the world" at *Epcot*® where you will experience firsthand a Segway Personal Transporter. After completing a required product overview and training, you will be equipped with a helmet before you experience an outdoor ride on a set course through *World Showcase*. Guests should arrive at least 15 minutes prior to start time. Presented daily and lasts approximately 2 hours. Guests must be at least 16 years of age to participate.

The UnDISCOVERed Future World Tour

Discover the *Future World* that Guests rarely get to see. Hear intriguing stories about Walt Disney and his ultimate dream: *Epcot*®. Appreciate Walt Disney's living legacy by visiting the *Future World* pavilions, including some rare glimpses of backstage areas. Presented Monday, Wednesday and Friday and lasts approximately 4 hours. Guests must be at least 16 years of age to participate.

Simply Segway Experience at Epcot® Tour

Experience firsthand a Segway Personal Transporter. You will be equipped with a helmet and have a product overview during this one-hour classroom experience. This is a beginner's Segway class and includes some training and indoor riding time. (There will be no outdoor riding time.) Presented daily. Guests must be at least 16 years of age to participate.

Backstage Magic

A "must do" for any true Disney Fan! Ever wonder what it takes to create the special effects and details found throughout the *Walt Disney World*® Resort? Participants will be astounded as Backstage Magic unveils the fine points behind the artistic, technical, and scientific operations found throughout the theme parks. This 7-hour behind-the-scenes adventure guides Guests through the magic of one man's dream, Walt Disney. Presented Monday through Friday. Guests must be at least 16 years of age to participate.



Behind the Seeds, A Special Guided Greenhouse Tour

Go behind the scenes at *The Land* pavilion at Epcot® to explore the wonders of growing food plants with the Disney touch! Tour greenhouses to discover crops from around the world and see some of the latest techniques used to grow and improve plants. Watch as beneficial insects used at *The Land* pavilion at Epcot® battle pests that can destroy our food supply. Take home environmentally friendly ideas for growing your own gardens. Then venture through the fish farm to see thousands of fish and alligators, too! Presented daily and lasts approximately 1 hour. Same-day reservations may be made at the tour desk near *Soarin*™, lower level of *The Land* pavilion at Epcot®. Guests of all ages may participate.

Disney's Dolphins in Depth Tour

Disney's Dolphins in Depth program allows you to explore the world of Atlantic Bottlenose Dolphins and to actually see research projects in session. You will learn if dolphins really do have the ability to plan their behavior. Most importantly, you will meet them up close and personal in the water! You are guaranteed to get wet and maybe even get splashed by our resident dolphins. You don't need to swim or have scuba certification to enjoy this program, but you will need to be at least 13 years of age to experience the magic of these beautiful creatures. *Disney's Dolphins in Depth* is presented Tuesday through Saturday and lasts approximately 3 hours. Wet suits are provided but guests must bring their own swimsuit. This program is subject to change.

Epcot® DiveQuest Tour

Imagine a salt-water dive with 203 feet of visibility and over 4000 animals native to the Caribbean swimming with you in every direction. Tropical fish, sharks, sting rays, sea turtles, and plenty of coral for you to enjoy is just part of the fun. The other part is you become part of the show! Guests can view your dive through any of the 56 giant acrylic windows at *The Seas with Nemo & Friends* pavilion. Open-water scuba certification is required for all participants. Equipment is provided. Presented Tuesday through Saturday and lasts approximately 2½ hours. Guests must be at least 10 years of age to participate.

Epcot® Seas Aqua Tour

An exciting opportunity for non-scuba certified guests to take part in an in-water marine life exploration adventure. Guests will receive a facility tour of the aquarium that includes the backstage areas. After learning about the marine life, Guests will have the opportunity to explore our resident marine life while using SAS gear. The in-water experience will last approximately 30 minutes. The total length of the program is 2½ hours. Presented Tuesday through Saturday. Scuba Assisted Snorkel (SAS) gear and wet suit are provided. Guests need to provide their own swimsuit. Guests must be at least 8 years of age to participate.

Disney's Wild By Design Tour

Learn some of the stories behind the making of *Disney's Animal Kingdom*® Theme Park. You'll learn how art, architecture, and storytelling are combined to transport you to exotic lands filled with wild animals. This walking tour will provide insights into the design and building of this Theme Park as well as a glimpse into the complexities of caring for animals and habitats. Your journey will take you into the land of Anandapur, to the village of Harambe and through the colorful world of *Discovery Island*. A light continental breakfast will be served. Presented Monday, Wednesday, Thursday and Friday and lasts approximately 3 hours. Guests must be at least 14 years of age to participate (Guests ages 14 and 15 must be accompanied by a participating adult).

Disney's Backstage Safari Tour

Find out what happens behind the scenes at *Disney's Animal Kingdom*® Theme Park. Highlights include visits to a backstage animal housing area, the Animal Nutrition Center, and our state-of-the-art Veterinary Hospital. Then venture into the park to experience Kilimanjaro Safaris where you will be amazed at the details and passion involved in the creation of a truly unique theme park that is so much more than a zoo! Presented Monday, Wednesday, Thursday and Friday and lasts approximately 3 hours. Guests must be at least 16 years of age to participate.

Disney's Wilderness Back Trail Adventure

Indulge your adventurous spirit on Disney's Wilderness Back Trail Adventure, where you will experience firsthand a Segway X2 Personal Transporter as you glide through the pristine Florida wilderness in and around *Disney's Fort Wilderness Resort & Campground*. No experience necessary! Presented Tuesday through Saturday and lasts approximately 2 hours. Guests must be at least 16 years of age to participate.

